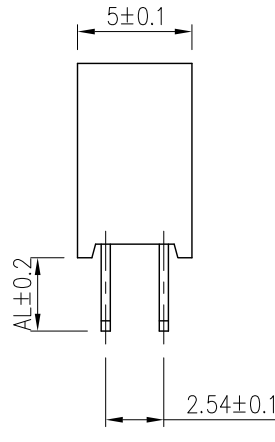
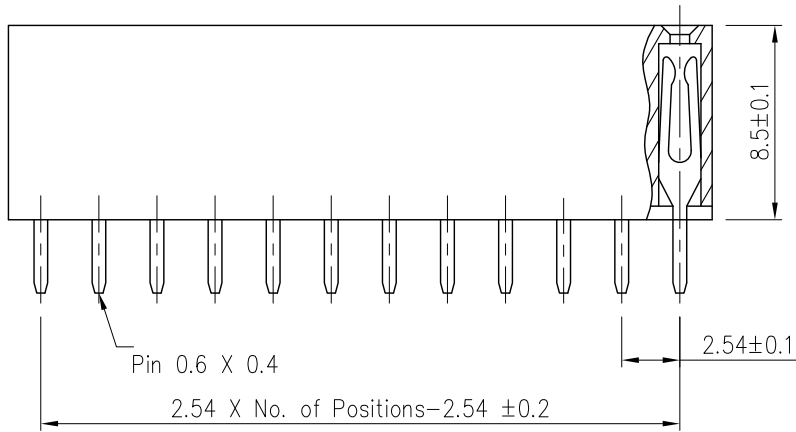
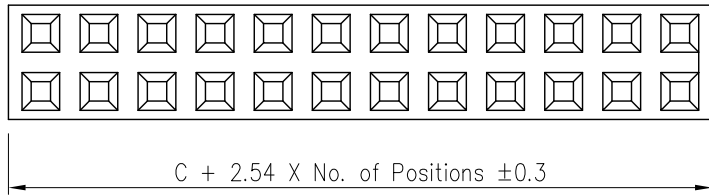
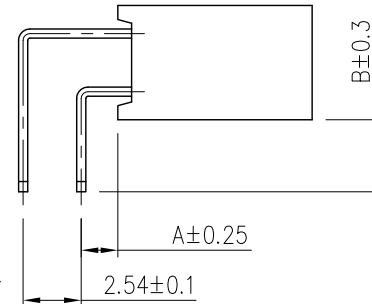


Specifications

Current Rating : 3 Amps  
 Insulator Resistance : 1000 Megohms min.  
 Contact Resistance : 20 m ohms max.  
 Dielectric Withstanding : AC 600V  
 Operating Temperature : -40°C ~ +105°C  
 Contact Material : Brass  
 Insulator Material : Polyester, UL 94V-0  
 Standard :  
 Contact Plated : Full Gold, Full Tin, Selective Plated

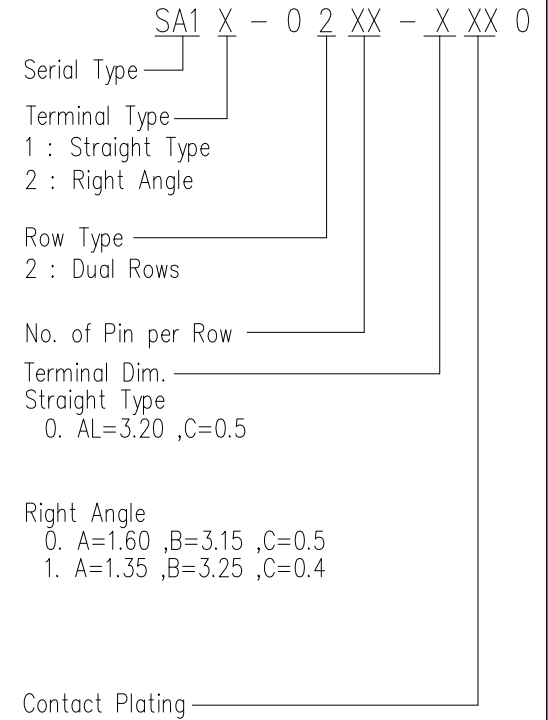


Straight

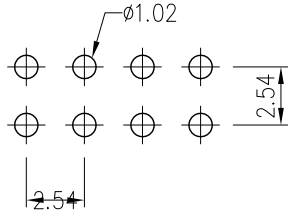


Right Angle

Order Information



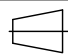
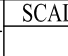


Recommended  
 P.C. Board  
 Hole Layout



Contact Plating Type		
Full Gold Plating	Duplex Plating Gold Plated On Contact Area Tin Plated On Solder Area	Full Tin Plating
GF : Gold Flash G1 : Gold 3u" G2 : Gold 5u" G3 : Gold 10u" G4 : Gold 15u"	HF : Gold Flash, Tin 100u" H1 : Gold 3u", Tin 100u" H2 : Gold 5u", Tin 100u" H3 : Gold 10u", Tin 100u" H4 : Gold 15u", Tin 100u"	T1 : Tin 100u"

				TOLERANCE UNLESS SPECIFIED	
				LINEAR	ANGLE
				.X ± 0.25	X' ± 5'
				.XX ± 0.15	.X' ± 2'
				.XXX ± 0.05	.XX' ± 1'
			日期	2005.11.18	
			審核		
更改 REV.	設 變 內 容 MODIFICATION	修改 DRAWN	核准 APPROVED	製 圖	SAM

 朝富科技股份有限公司 JOIN TEK CORPORATION CO., LTD.		
 SCALE	 SHEET	 VER.
名稱 : Female Header P2.54 TITLE Profile : 8.5mm, Dual Rows		
料號 : SA1X-02XX-XXX0 PART NO.		