

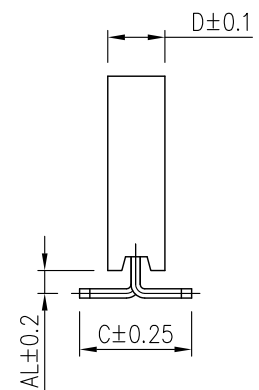
Recommended P.C.B. Layout

Specifications

Current Rating : 3 Amps
 Insulator Resistance : 1000 Megohms min.
 Contact Resistance : 20 m ohms max.
 Dielectric Withstanding : AC 600V
 Operating Temperature : -40°C ~ +105°C
 Contact Material : Brass
 Insulator Material : Polyester, UL 94V-0
 Standard :
 Contact Plated : Full Gold, Full Tin, Selective Plated

Order Information

Serial Type SA1 3 - X 1 XX - X XX E
 Terminal Type 3 : SMT Type
 Pin Layout Type A. A-Type B. B-Type
 Row Type 1 : Single Row
 No. of Pin per Row
 Terminal Dim. 0. AL=1.00 ,C=4.90 ,D=2.50
 1. AL=.... ,C=.... ,D=....
 Contact Plating
 Packing List A. In Tube B. W/Cap In Tube C. W/Flim In Tube D. W/Cap In Tape & Reel E. W/Flim In Tape & Reel



Contact Plating Type		
Full Gold Plating	Duplex Plating Gold Plated On Contact Area Tin Plated On Solder Area	Full Tin Plating
GF : Gold Flash	HF : Gold Flash, Tin 100u"	T1 : Tin 100u"
G1 : Gold 3u"	H1 : Gold 3u", Tin 100u"	
G2 : Gold 5u"	H2 : Gold 5u", Tin 100u"	
G3 : Gold 10u"	H3 : Gold 10u", Tin 100u"	
G4 : Gold 15u"	H4 : Gold 15u", Tin 100u"	

		TOLERANCE UNLESS SPECIFIED		朝富科技股份有限公司 JOIN TEK CORPORATION CO., LTD.		
		LINEAR	ANGLE			
		.X ± 0.25	X' ± 5'		1/1	A
		.XX ± 0.15	X' ± 2'			
		.XXX ± 0.05	.XX' ± 1'			
		日期	2016.05.25			名稱 : Female Header P2.54
		審核				TITLE Profile : 8.5mm, Single Row SMT
更改 REV.	設變內容 MODIFICATION	修改 DRAWN	核准 APPROVED	製圖	料號 : SA13-01XX-XXXX PART NO.	
				SAM		