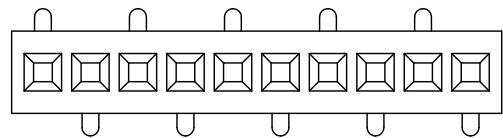


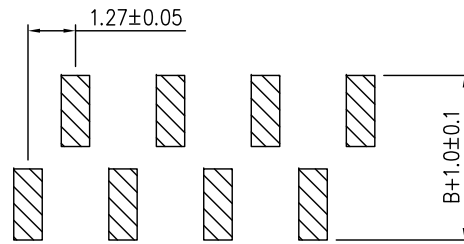
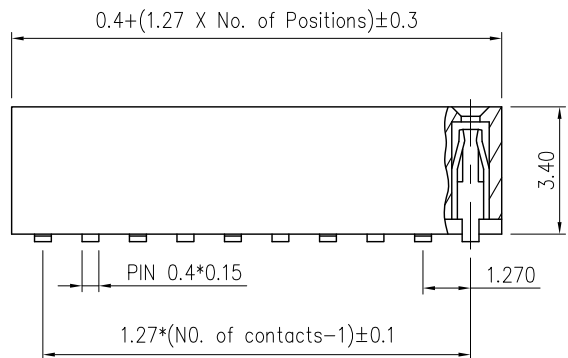
#1

B : B Type

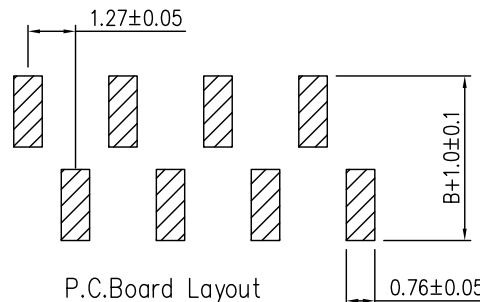


#1

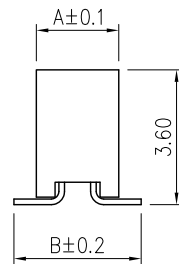
A : A Type



P.C.Board Layout



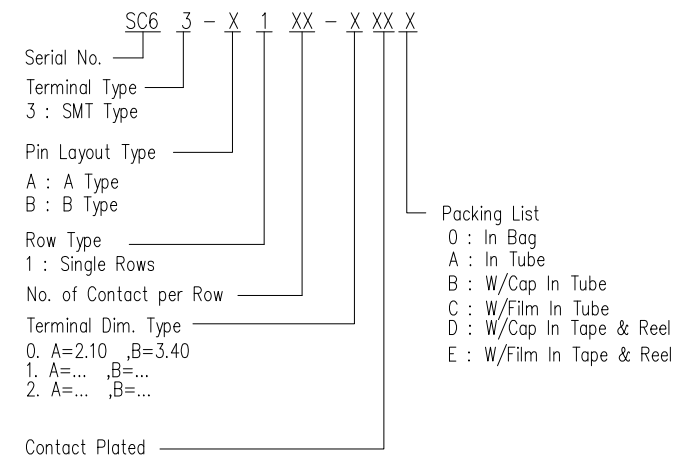
P.C.Board Layout



Specifications


Current Rating : 1 Amps
 Insulator Resistance : 1000 Megohms min.
 Contact Resistance : 20 m ohms max.
 Dielectric Withstanding : AC 300V
 Operating Temperature : -40°C ~ +105°C
 Contact Material : Phosphor Bronze
 Insulator Material : Polyester, UL 94V-0
 Standard : Nylon 6T
 Contact Plated : Full Gold, Full Tin, Selective Plated

Order Information



Contact Plating Type		
Full Gold Plating	Duplex Plating Gold Plated On Contact Area Tin Plated On Solder Area	Full Tin Plating
GF : Gold Flash G1 : Gold 3u" G2 : Gold 5u" G3 : Gold 10u" G4 : Gold 15u"	HF : Gold Flash, Tin 100u" H1 : Gold 3u", Tin 100u" H2 : Gold 5u", Tin 100u" H3 : Gold 10u", Tin 100u" H4 : Gold 15u", Tin 100u"	T1 : Tin 100u"

				TOLERANCE UNLESS SPECIFIED	
				LINEAR	ANGLE
				.X ± 0.30	X' ± 5'
				.XX ± 0.20	.X' ± 2'
				.XXX ± 0.10	.XX' ± 1'
			日期	2014.05.08	
			審核		
更改 REV.	設 變 內 容 MODIFICATION	修改 DRAWN	核准 APPROVED	製 圖	JASON


朝富科技股份有限公司
 JOIN TEK CORPORATION CO., LTD.

SCALE	SHEET	VER.
	1/1	A

名稱 : Female Header P1.27 SMT TYPE
 TITLE : Single Row
 料號 : SC63-X1XX-XXXX
 PART NO.