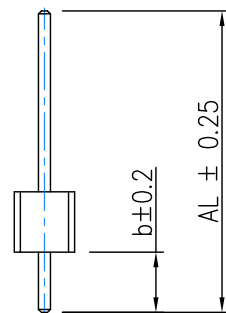
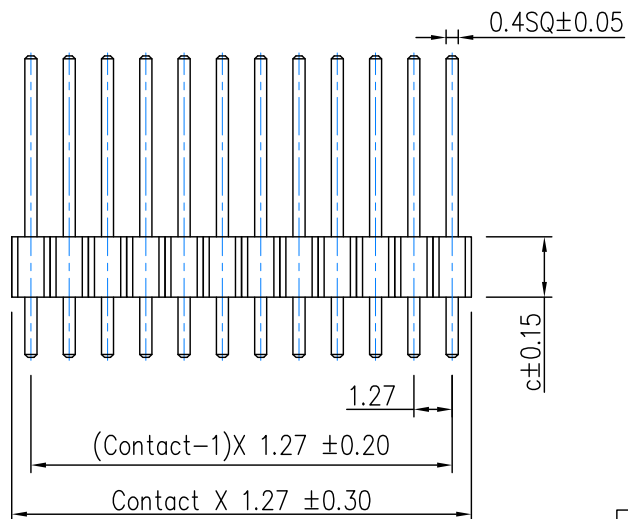


P.C. Board Layout



Specifications

Current Rating : 1 Amps
 Insulator Resistance : 1000 Megohms min.
 Contact Resistance : 20 m ohms max.
 Dielectric Withstanding : AC 500V
 Operating Temperature : -40°C ~ +105°C
 Contact Material : Brass
 Insulator Material : Polyester, UL 94V-0
 Standard :
 Contact Plated : Full Gold Flash

Order Information

Serial No. PC3 1 - 0 1 XX - X XX X
 Terminal Type 1 : Straight Type
 Row Type 1 : Single Rows
 No. of Contact per Row 10
 Terminal Dim. Type 1


Packing List
 O : In Bag
 A : In Tube
 B : W/Cap In Tube
 C : W/Film In Tube
 D : W/Cap In Tape & Reel
 E : W/Film In Tape & Reel

- 1. AL=17.00 ,b=2.00 ,c=2.00
- 2. AL=8.40 ,b=1.83 ,c=1.00
- 3. AL=7.00 ,b=3.00, c=1.00
- 4. AL=6.30 ,b=2.30, c=1.00
- 5. AL=5.50 ,b=1.60, c=1.50
- 6. AL=6.00 ,b=2.00, c=1.00
- 7. AL=5.80 ,b=1.80, c=1.00
- 8. AL=11.00 ,b=3.05, c=2.5
- 9. AL=5.65 ,b=1.05, c=1.50
- A. AL=9.05 ,b=1.10, c=2.50
- B. AL=6.70 ,b=2.00, c=1.50
- C. AL=4.60 ,b=1.80, c=1.00

Contact Plated

Contact Plating Type		
Full Gold Plating	Duplex Plating Gold Plated On Contact Area Tin Plated On Solder Area	Full Tin Plating
GF : Gold Flash	HF : Gold Flash, Tin 100u"	TT : Tin 100u"
G1 : Gold 3u"	H1 : Gold 3u", Tin 100u"	
G2 : Gold 5u"	H2 : Gold 5u", Tin 100u"	
G3 : Gold 10u"	H3 : Gold 10u", Tin 100u"	
G4 : Gold 15u"	H4 : Gold 15u", Tin 100u"	

				TOLERANCE UNLESS SPECIFIED	
				LINEAR	ANGLE
				.X ± 0.25	X.' ± 5'
				.XX ± 0.15	.X' ± 2'
				.XXX ± 0.05	.XX' ± 1'
				日期	2006.01.19
				審核	
更改 REV.	設 變 內 容 MODIFICATION	修改 DRAWN	核准 APPROVED	製 圖	SAM


朝富科技股份有限公司
 JOIN TEK CORPORATION CO., LTD.

SCALE	SHEET	VER.
	1/1	B

名稱 : Pin Header P1.27mm
 TITLE 辦(180°)
 料號 : PC31-01XX-XGFO
 PART NO.