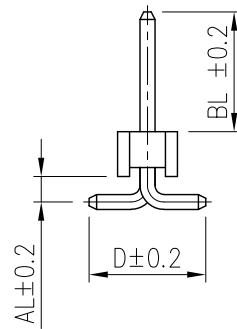


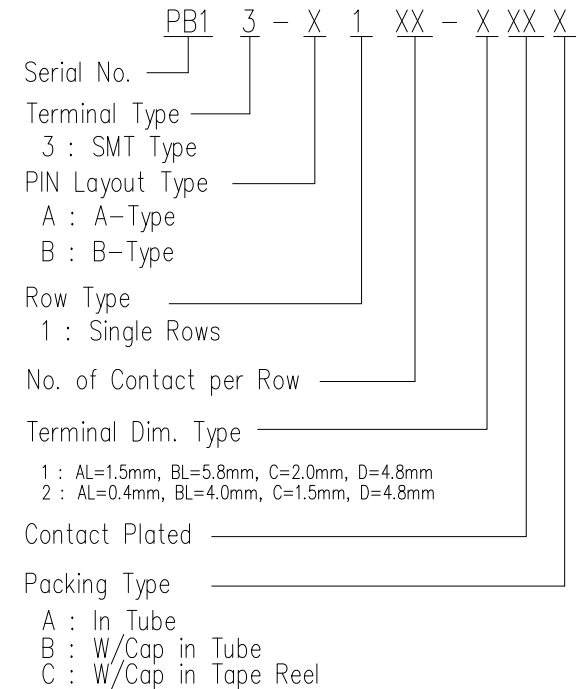
Recommended
P.C. Board Layout



Specifications

- Current Rating : 1 Amps
- Insulator Resistance : 1000 Megohms min.
- Contact Resistance : 20 m ohms max.
- Dielectric Withstanding : AC 500V
- Operating Temperature : -40°C ~ +105°C
- Contact Material : Brass
- Insulator Material : Polyester, UL 94V-0
- Standard : Nylon-6T
- Contact Plated : Full Gold, Full Tin, Selective Plated

Order Information



Contact Plating Type		
Full Gold Plating	Duplex Plating Gold Plated On Contact Area Tin Plated On Solder Area	Full Tin Plating
GF : Gold Flash G1 : Gold 3u" G2 : Gold 5u" G3 : Gold 10u" G4 : Gold 15u"	HF : Gold Flash, Tin 100u" H1 : Gold 3u", Tin 100u" H2 : Gold 5u", Tin 100u" H3 : Gold 10u", Tin 100u" H4 : Gold 15u", Tin 100u"	T1 : Tin 100u"

TOLERANCE UNLESS SPECIFIED			
LINEAR		ANGLE	
.X	± 0.30	X'	± 5'
.XX	± 0.20	.X'	± 2'
.XXX	± 0.10	.XX'	± 1'
日期	2012.10.01		
審核			
更改 REV.	設 變 內 容 MODIFICATION	修改 DRAWN	核准 APPROVED
製 圖	JASON		

朝富科技股份有限公司
JOIN TEK CORPORATION CO., LTD.

SCALE SHEET VER.
1/1 A

名稱 : Pin Header P2.0mm
TITLE Singel Row SMT Type

料號 : PB13-01XX-XXXX
PART NO.